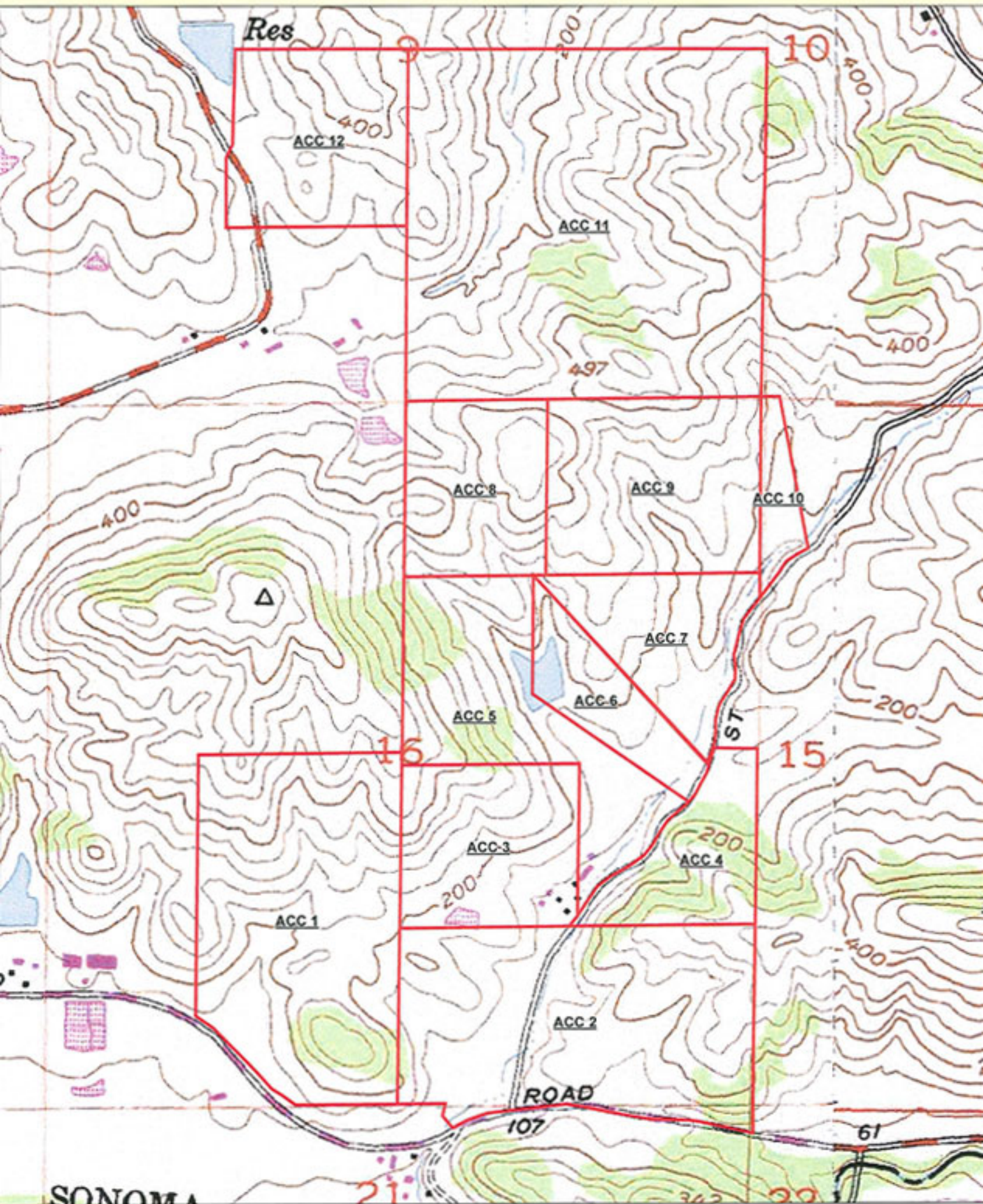


# USGS TOPO MAP - PETALUMA QUADRANGLE

SECTIONS 9,10,15,&16, TOWNSHIP 4 NORTH, RANGE 7 WEST, MDM



Assessor's Parcel No. 019-250-009, 010, 012, 013  
San Antonio Road Petaluma, Sonoma County

1 inch equals 700 feet



SOURCES:  
Petaluma, Calif. USGS 7.5-minute quadrangle,  
from Image Peak Systems Corp; 40-foot contour interval.  
Parcel data from County of Sonoma.



MAPPING A BETTER WORLD  
Ray Carlson & Associates, Inc  
LAND SURVEYING GIS PLANNING RESEARCH  
411 Russell Ave Santa Rosa CA 95403  
(707) 538-7449 Fax (707) 571-5541  
<http://www.rcmaps.com>