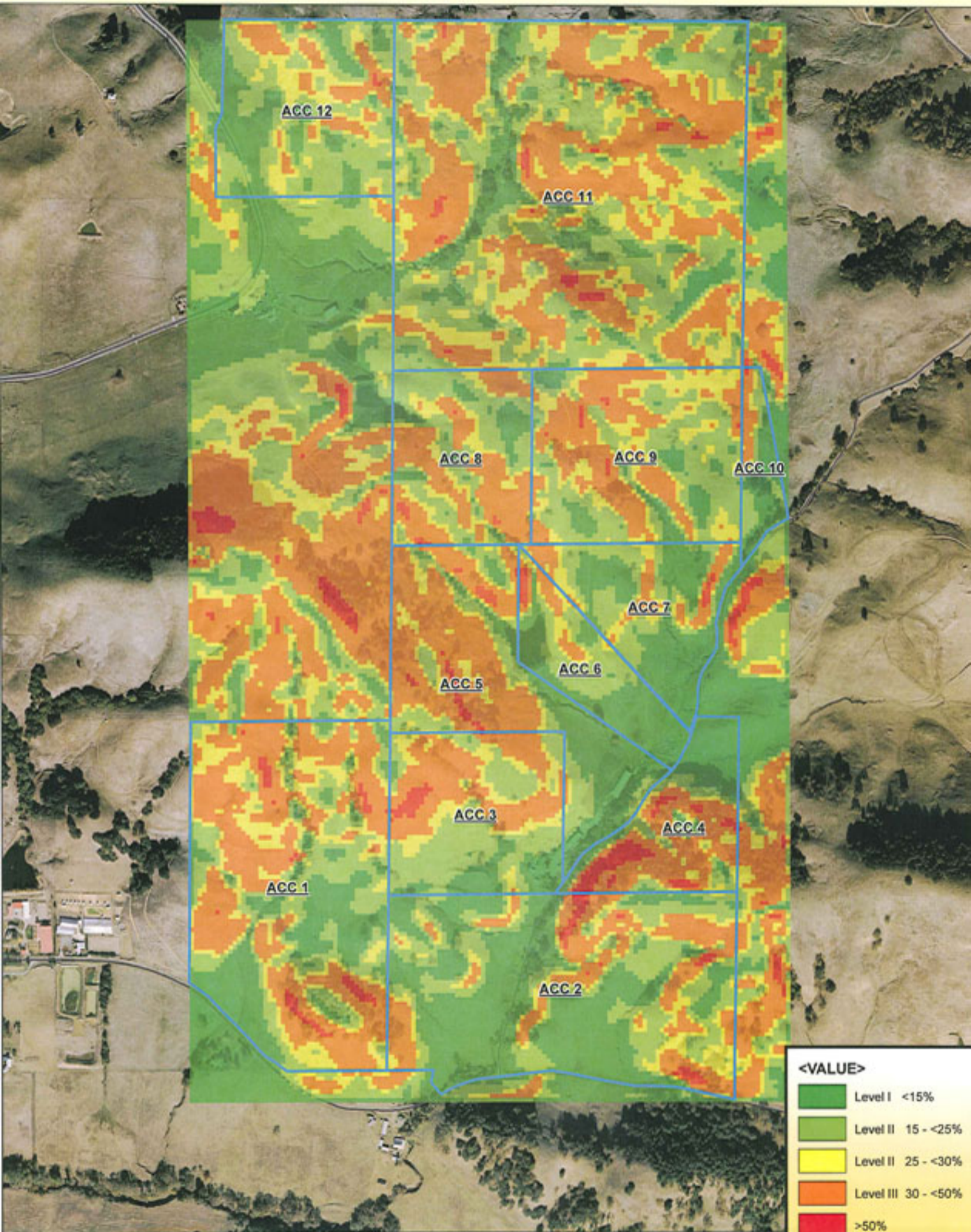


# SLOPE CLASSIFICATION

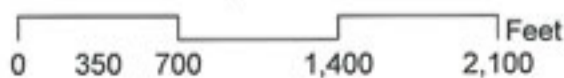


Assessor's Parcel No. 019-250-009, 010, 012, 013  
San Antonio Road Petaluma, Sonoma County



SOURCES:  
Contours and slope analysis by Ray Carlson & Assoc.,  
Inc using USGS National Elevation Dataset from Image  
Peak Systems Corp.  
Parcel and street data from County of Sonoma.  
Orthophotography by DigitalGlobe Inc, December 2005.

1 inch equals 700 feet



MAPPING A BETTER WORLD  
**Ray Carlson & Associates, Inc**  
LAND SURVEYING  
411 Russell Ave. Santa Rosa CA 95403  
707-528-7649 www.rcmaps.com  
©2006 Ray Carlson & Associates, Inc.

©2008