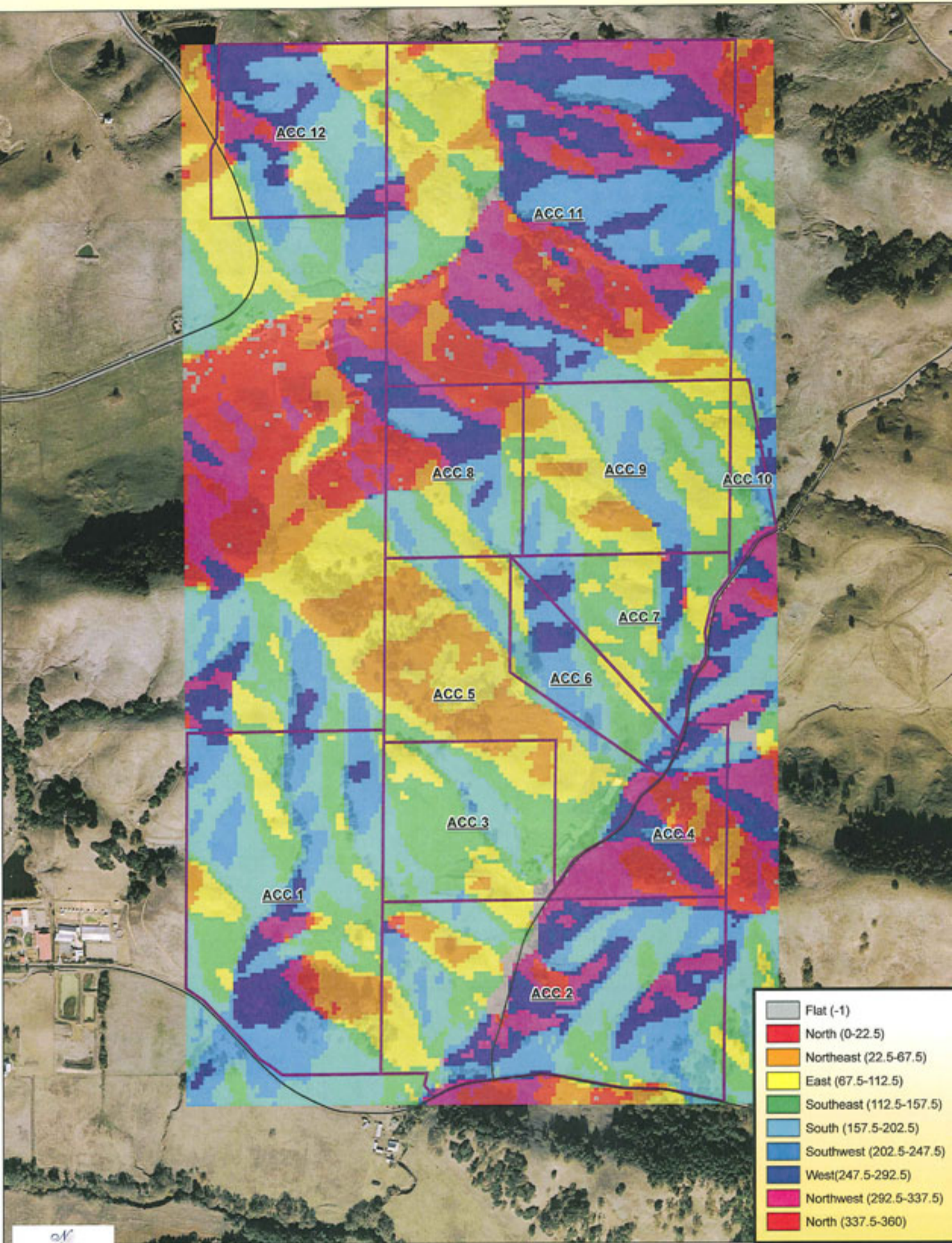


ASPECT (The Direction a Slope Faces)



Flat (-1)
North (0-22.5)
Northeast (22.5-67.5)
East (67.5-112.5)
Southeast (112.5-157.5)
South (157.5-202.5)
Southwest (202.5-247.5)
West (247.5-292.5)
Northwest (292.5-337.5)
North (337.5-360)

Assessor's Parcel No. 019-250-009, 010, 012, 013
San Antonio Road Petaluma, Sonoma County



MAPPING A BETTER WORLD
Ray Carlson & Associates, Inc.
LAND SURVEYING GIS PLANNING RESEARCH
411 Russell Ave Santa Rosa CA 95403
[707] 528-7649 Fax [707] 571-5541
<http://www.rcmaps.com>

SOURCES:
Contours and aspect analysis by Ray Carlson & Assocs, Inc using USGS National Elevation Dataset from Image Peak Systems Corp.
Parcel and street data from County of Sonoma.
Orthophotography by DigitalGlobe Inc, December 2005.

1 inch equals 700 feet

