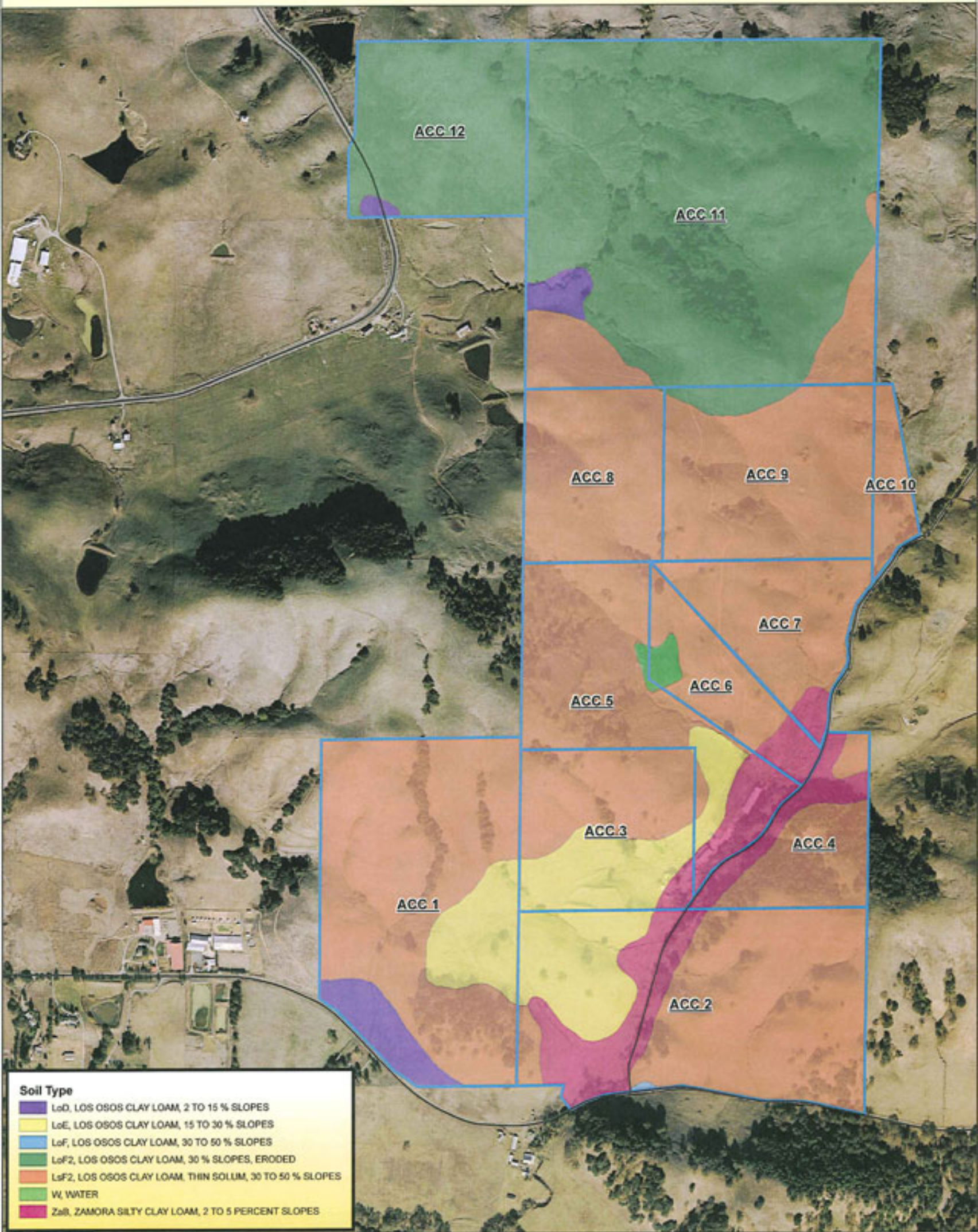
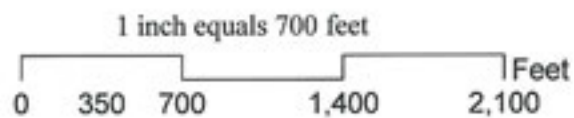


2005 AERIAL WITH SOIL UNITS



Assessor's Parcel No. 019-250-009, 010, 012, 013
San Antonio Road Petaluma, Sonoma County

SOURCES:
Soil data from USDA Natural Resources Conservation Service.
Parcel and street data from County of Sonoma.
Orthophotography by DigitalGlobe Inc, December 2005.



MAPPING A BETTER WORLD
Ray Carlson & Associates, Inc.
LAND SURVEYING
411 Russell Ave. Santa Rosa, CA 95403
707-528-7649 www.rcmaps.com
©2006 Ray Carlson & Associates, Inc.